

smartfix® - Parklex® Panels - Timber Composite Panel

High Performance Timber Finish

Parklex 1000® is an exterior grade, high performance composite panel finished with specially treated natural timber veneers - an exciting new product offering design options previously unavailable in the Australian industry. In conjunction with the Smartfix® fixing system, Parklex 1000® can be installed effectively and attractively in many external applications such as wall claddings, louvre systems, fascias, column encasements, signage, soffits, spandrels, balustrades, etc or wherever a timber finish is designated.



Standard Panels

Thickness: 5mm or 6mm

Width: 1220mm

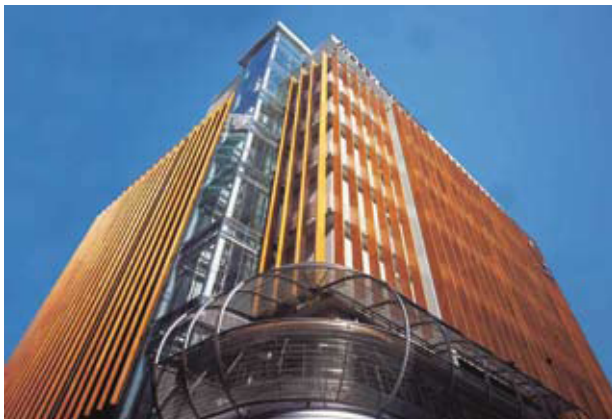
Lengths: 2440mm

Parklex 1000® panels comprise an inner core of Kraft® paper and wood chip based thermoset phenolic resin lined with natural timber veneer material that is impregnated with thermo-hardened resins and prefinished with a clear, Parklex® proprietary coating system.

Parklex 1000® panels are available in standard thicknesses of (mm): 3, 6, 8, 10, 12, 14, 16, 18, 20 & 22. Other non-standard thicknesses are available upon request.

Technical Properties & Test Certificates

A full set of technical properties and test certificates available for download from the smartfix® web site.



Durability

Minimum maintenance is required; clean with water and non-abrasive cleaner. Parklex 1000® is highly resistant to varying climatic conditions, including freeze/thaw, salt spray, dry climate and UV ray exposure. It is non-toxic and resists mold, mildew, fungus and is impervious to termite attack.



Key features of Parklex 1000®

Similarly to the Symimonite aluminium composite panel core material, the advantages of Parklex 1000® core over other materials in composite panels available to building professionals stem from the superior technology of thermoset phenolics which originates in the aerospace industry and which was developed specifically for dimensional, chemical and structural stability under extremes of temperature, humidity and climatic variables. As such, Parklex® offers performance factors that by far exceed those of solid timber: high impact and abrasion resistance, high fire resistance, dimensional stability, structural strength and stiffness and UV resistance.

Additionally, the environmental friendliness of Parklex® is considerably greater than other cladding products. The timber veneers are sourced from renewable sources and the embodied energy of timber is much lower than that of other materials.

NOTE: Traditional Parklex fixing systems also supplied by smartfix®.